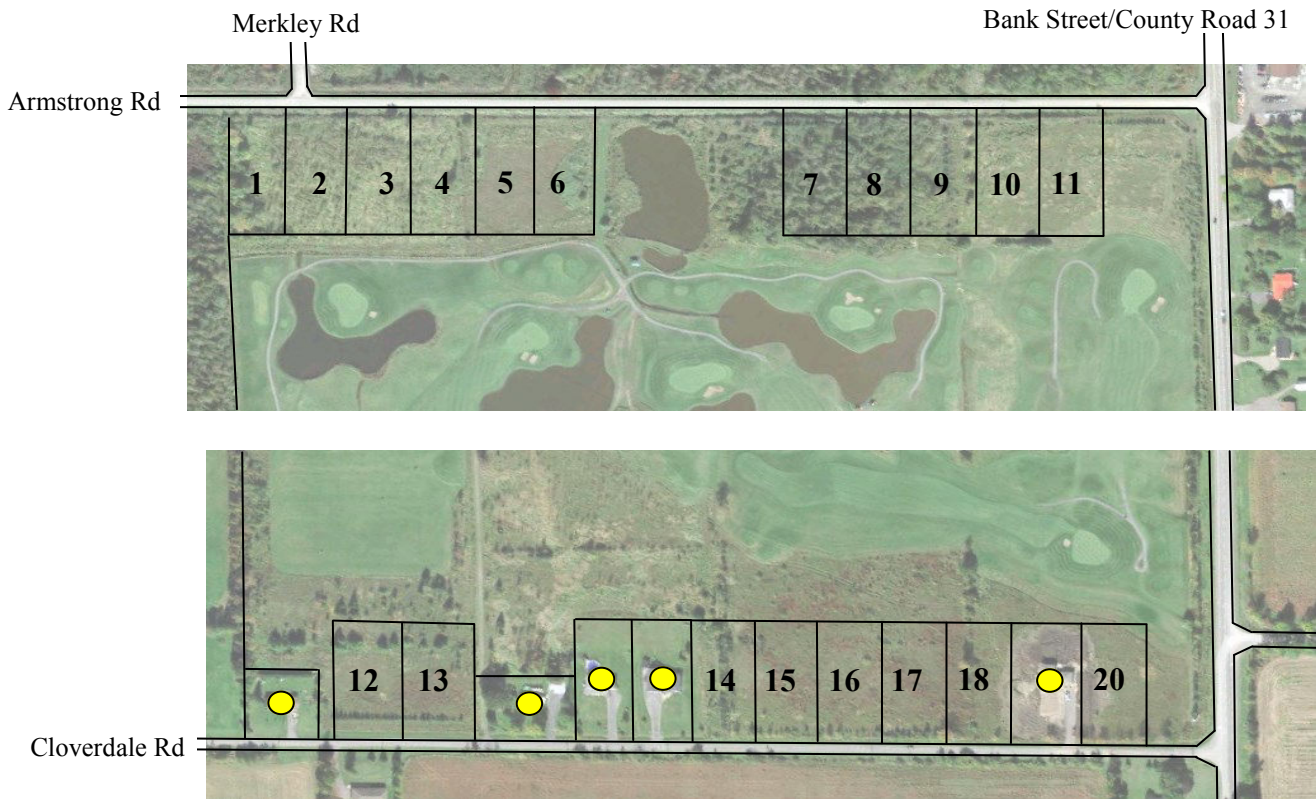




Cloverdale Links

*Golf Course Estates—Phase I
Building Lot Information*



- *One acre and larger lots starting at \$59,900*
- *Golf Course Views*
- *Under 5 minutes from*



613-774-2323



www.oldford.ca



Cloverdale Links

Golf Course Estates—Phase I

Building Lot Information

Lot	Street	acreage	Frontage	Depth	Price	Notes
1	Armstrong	1.05	146	312.34	\$59,900	
2	Armstrong	1.05	146	312.34	\$59,900	
3	Armstrong	1.05	146	312.34	\$59,900	
4	Armstrong	1.05	146	312.34	\$59,900	
5	Armstrong	1.05	146	312.34	\$59,900	
6	Armstrong	1.06	160.14	311.86	\$59,900	
7	Armstrong	1.06	147.64	328.08	\$59,900	
8	Armstrong	1.06	147.64	328.08	\$59,900	
9	Armstrong	1.06	147.64	328.08	\$59,900	
10	Armstrong	1.06	147.64	328.08	\$64,900	
11	Armstrong	1.06	147.64	328.08	\$64,900	
12	Cloverdale	1.17	147.64	300.2	\$79,000	
13	Cloverdale	1.17	147.64	300.2	\$79,000	Test well on site
14	Cloverdale	1.05	147.64	300	\$69,000	
15	Cloverdale	1.05	147.64	300	\$69,000	
16	Cloverdale	1.05	147.64	300	\$69,000	
17	Cloverdale	1.05	147.64	300	\$69,000	
18	Cloverdale	1.05	147.64	300	\$69,000	
19	Cloverdale	1.05	147.64	300	\$69,000	
20	Cloverdale	1.05	147.64	300	\$69,000	



613-774-2323



www.oldford.ca

Armstrong Rd

1	\$59,900
2	\$59,900
3	\$59,900
4	\$59,900
5	\$59,900
6	\$59,900

7	\$59,900
8	\$59,900
9	\$59,900
10	\$64,900
11	\$64,900



Cloverdale Links

Golf Course Estates—Phase I

12	\$79,000	13	\$79,000	14	\$69,000	15	\$69,000	16	\$69,000	17	\$69,000	18	\$69,000	20	\$69,000
----	----------	----	----------	----	----------	----	----------	----	----------	----	----------	----	----------	----	----------

Cloverdale Rd

